



AMD VISION Engine Control Center

Preferences

Search

Start

> Pinned

> Presets



Desktops and Displays

Change your display settings and enable additional displays.

- Add/Remove Displays
- Desktop Management
- My Built-in Displays
- Advanced Display Settings



Power

Change power settings to maximize battery life or reduce power usage.

- PowerPlay™
- Wi-Fi Radio
- Power Profiles
- CPU Power



Video

Enhance the quality of video playback or convert videos to other file formats.

- Color
- Quality
- AMD Steady Video



Gaming

Manage graphics settings for gaming.

- Gaming Performance
- Image Quality



AMD VISION Engine Control Center

Preferences

Search

Start Desktops and Displays

> Pinned

> Presets



Desktops and Displays



Add/Remove Displays

Manages topology of displays and desktops in the system by enabling and disabling them.

Detect Displays



Desktop Management

Manage how Windows desktops appear on my displays.

Desktop Properties
Rotate Desktop
Desktop Color



My Built-in Displays

Control how images appear on displays that are built into your computer.

Properties (Built-in Display)
Display Color (Built-in Display)

Advanced Display Settings

Detect displays that are connected to your computer.

Advanced Display Settings



AMD VISION Engine Control Center

Preferences

Search

Start Desktops and Displays Add/Remove Displays

- > Pinned
- > Presets

Add/Remove Displays

Detect Displays

Detect displays that are connected to your computer.

[Detect Displays](#)



AMD VISION Engine Control Center

Preferences

Search

Start Desktops and Displays Add/Remove Displays Detect Displays

- > Pinned
- > Presets

Detect Displays

Detect displays that are connected to your computer.



Detection is complete.

Identify All

 HSD121PHW1	 W2442
---	--

To continue, start a new task.

Discard Apply



AMD VISION Engine Control Center

Preferences

Search

Start Desktops and Displays

> Pinned

> Presets



Desktops and Displays



Add/Remove Displays

Manages topology of displays and desktops in the system by enabling and disabling them.

Detect Displays

Disable Display



Desktop Management

Manage how Windows desktops appear on my displays.

Desktop Properties

Rotate Desktop

Set Preferred Display

More...



My Built-in Displays

Control how images appear on displays that are built into your computer.

Properties (Built-in Display)

Display Color (Built-in Display)



My VGA Displays

Control how images appear on a display connected by VGA (such as a projector, CRT, or some LCD displays).

Properties (VGA Display)

Image Adjustments (VGA Display)



AMD VISION Engine Control Center

Preferences

Search

Start Desktops and Displays Desktop Management

- > Pinned
- > Presets

Desktop Management

Desktop Properties

Change the size, refresh rate, color quality, and rotation of a desktop.

[Desktop Properties](#)

Rotate Desktop

Rotate a desktop to landscape or portrait mode.

[Rotate Desktop](#)

Set Preferred Display

Choose the display that should have the best viewing quality for videos in a duplicated desktop, or the principal display when gaming in an AMD Eyefinity display group.

[Set Preferred Display](#)

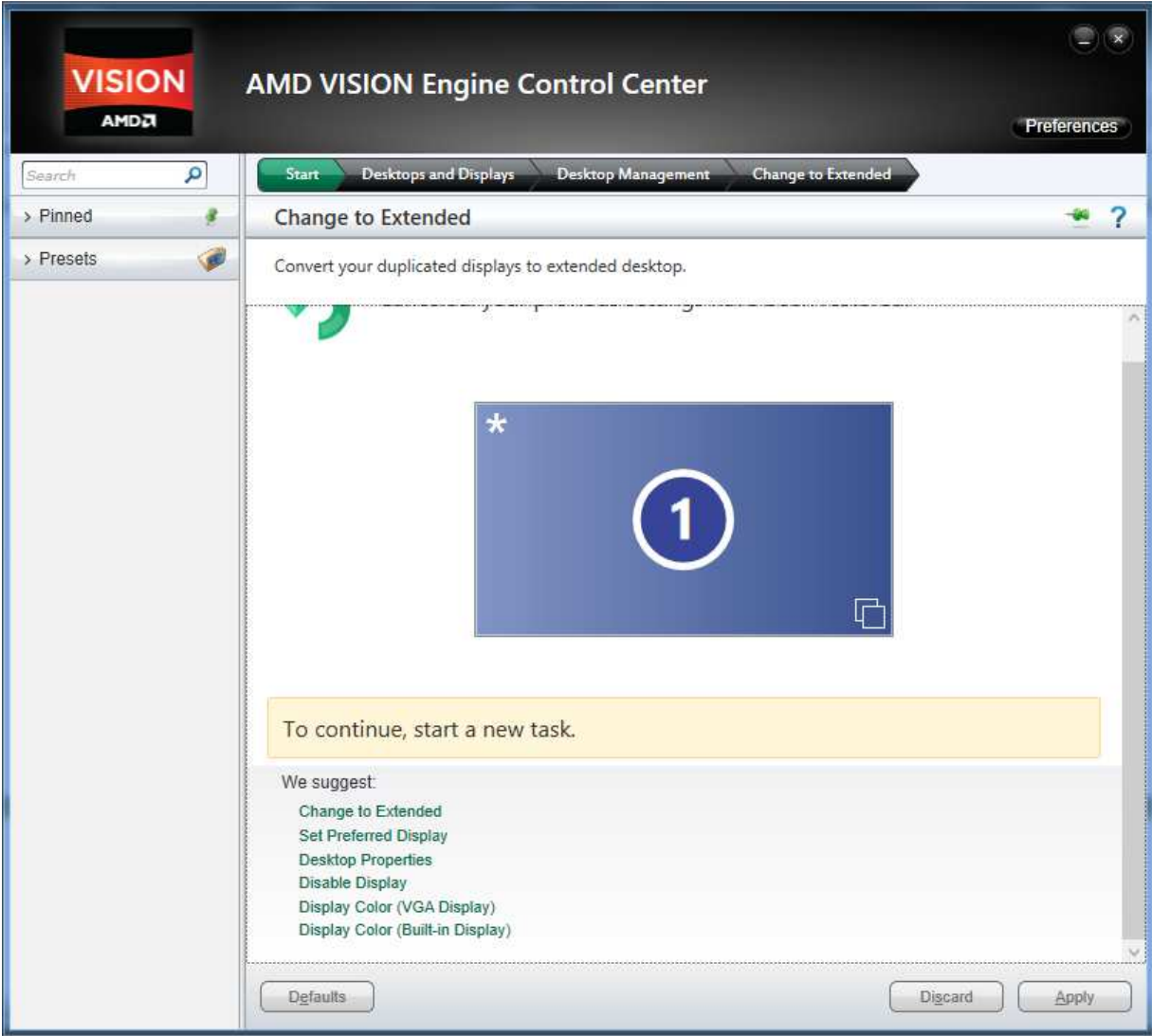
Change to Extended

Convert your duplicated displays to extended desktop.

[Change to Extended](#)

Desktop Color

Configure color settings for all displays associated with a desktop.



hier kannst du, etwas versteckt, wie ich zugeben muss, den anzeigemodus 'erweitert' waehlen, wie du deine displays betreiben moechtest :

- extended (beide monitore als 1, der eine wird also auf den anderen erweitert...)



...die erweiterten einstellungen aufrufen...



AMD VISION Engine Control Center

Preferences

Search

Start Desktops and Displays Desktop Management Desktop Properties

- > Pinned
- ▼ Presets
- Add Preset...
- Manage Presets...

Desktop Properties

Change the size, refresh rate, color quality, and rotation of a desktop.

1 Desktop 1

Select the desktop that you want to configure.

Identify All



Desktop area:

- 1280 x 720
- 1280 x 768
- 1280 x 1024
- 1400 x 1050
- 1600 x 900
- 1680 x 1050
- 1920 x 1080

Color quality:

High (32-bit)

Refresh rate:

60 Hz

Rotation:

Landscape

Discard

Apply

so kannst du die einzelnen auflösungen der montore einstellen, wenn du im weiterten dektopmenu bist.

um die auflösung sonst zu konfigurieren, must du allerdings vorher den bevorzugten monitor auswaehlen, dann kannst du umstellen.

meine einstellungen im moment :



AMD VISION Engine Control Center

Preferences

Search

Start Desktops and Displays Desktop Management Desktop Properties

- > Pinned
- ▼ Presets
- Add Preset...
- Manage Presets...

Desktop Properties

Change the size, refresh rate, color quality, and rotation of a desktop.

1 Desktop 1

Select the desktop that you want to configure.

Current Mode Settings

Desktop Type:	Extended
Mode:	1920 x 1080 @60 Hz
	High (32-bit)
	Landscape

Settings:

Desktop area:	Color quality:
1280 x 720	High (32-bit)
1280 x 768	Refresh rate:
1280 x 1024	60 Hz
1400 x 1050	Rotation:
1600 x 900	Landscape
1680 x 1050	
1920 x 1080	

Discard Apply

der externe monitor... full hd...



AMD VISION Engine Control Center

Preferences

Search

Start Desktops and Displays Desktop Management Desktop Properties

- > Pinned
- ▼ Presets
- Add Preset...
- Manage Presets...

Desktop Properties

Change the size, refresh rate, color quality, and rotation of a desktop.

2 Desktop 2
Select the desktop that you want to configure.

Current Mode Settings

Desktop Type:	Extended
Mode:	1366 x 768 @60 Hz
	High (32-bit)
	Landscape

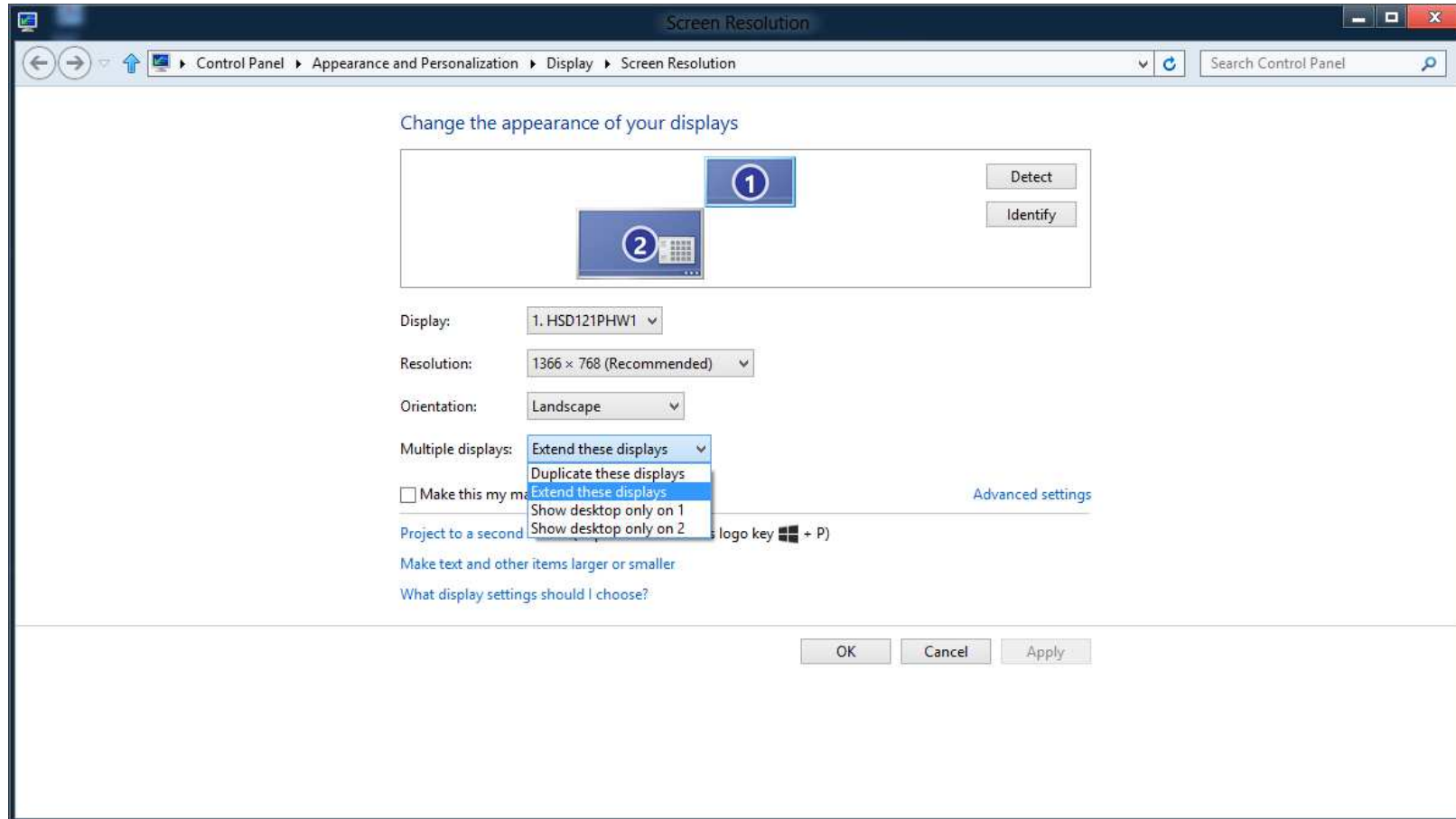
Settings:

Desktop area:	Color quality:
800 x 600	High (32-bit)
1024 x 600	Refresh rate:
1024 x 768	60 Hz
1280 x 720	Rotation:
1280 x 768	Landscape
1360 x 768	
1366 x 768	

Discard Apply

mein intern verbautes display. so sollte es bei dir auch aussehen... 😊

...ach ja, fast haette ich es vergessen zu zeigen... : auf dem desktop, rechtsklick auf bildschirmaufloesung →



gruss nayss 😊